

The logo for Anoka County Parks is a white, rounded rectangular shape with a thin white border. It contains the text "ANOKA COUNTY PARKS" in a green, sans-serif font. The background of the logo is a faint, light-colored image of a tree.

ANOKA  
COUNTY  
PARKS

The background image shows a wooden truss bridge crossing a river. The bridge is made of dark wood and has a lattice-like structure. The river is calm and reflects the surrounding greenery. The banks are lined with dense trees and bushes. The sky is clear and blue.

COON RAPIDS DAM REGIONAL PARK  
**BRIDGE, CULVERT & TRAIL  
RECONSTRUCTION**

# WELCOME

---

**ANOKA  
COUNTY**  
P A R K S

**DANIELLE SANBORN**

LANDSCAPE ARCHITECT

ANOKA COUNTY PARKS

**KAREN BLASKA**

PARK PLANNER

ANOKA COUNTY PARKS



# OVERALL IMPROVEMENTS



**ANOKA**  
**COUNTY**  
P A R K S



# PROPOSED IMPROVEMENTS

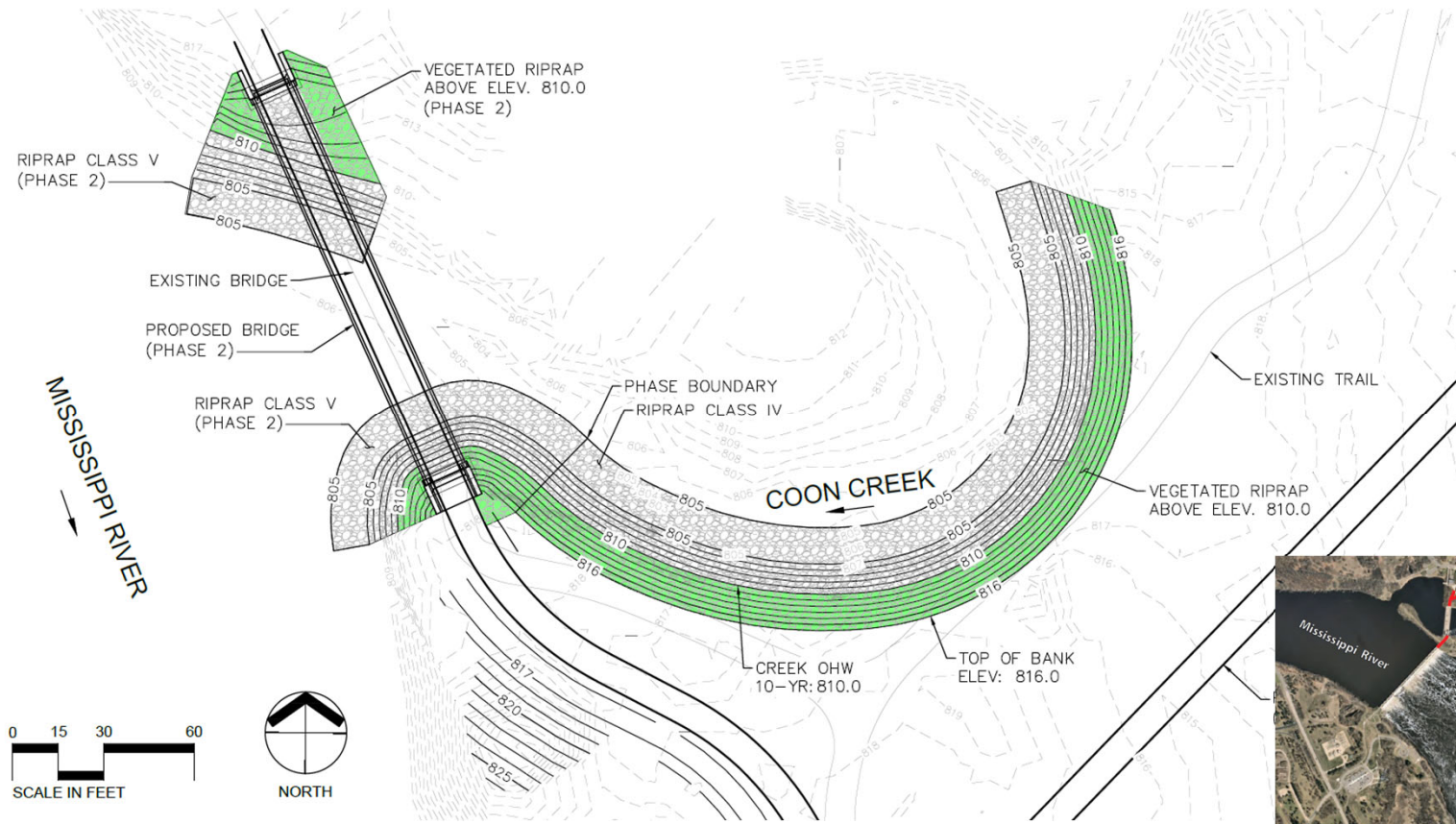
---

## BRIDGE REPLACEMENT

- CREEK BANK STABILIZATION
- TRAIL ROUTE ALTERATION

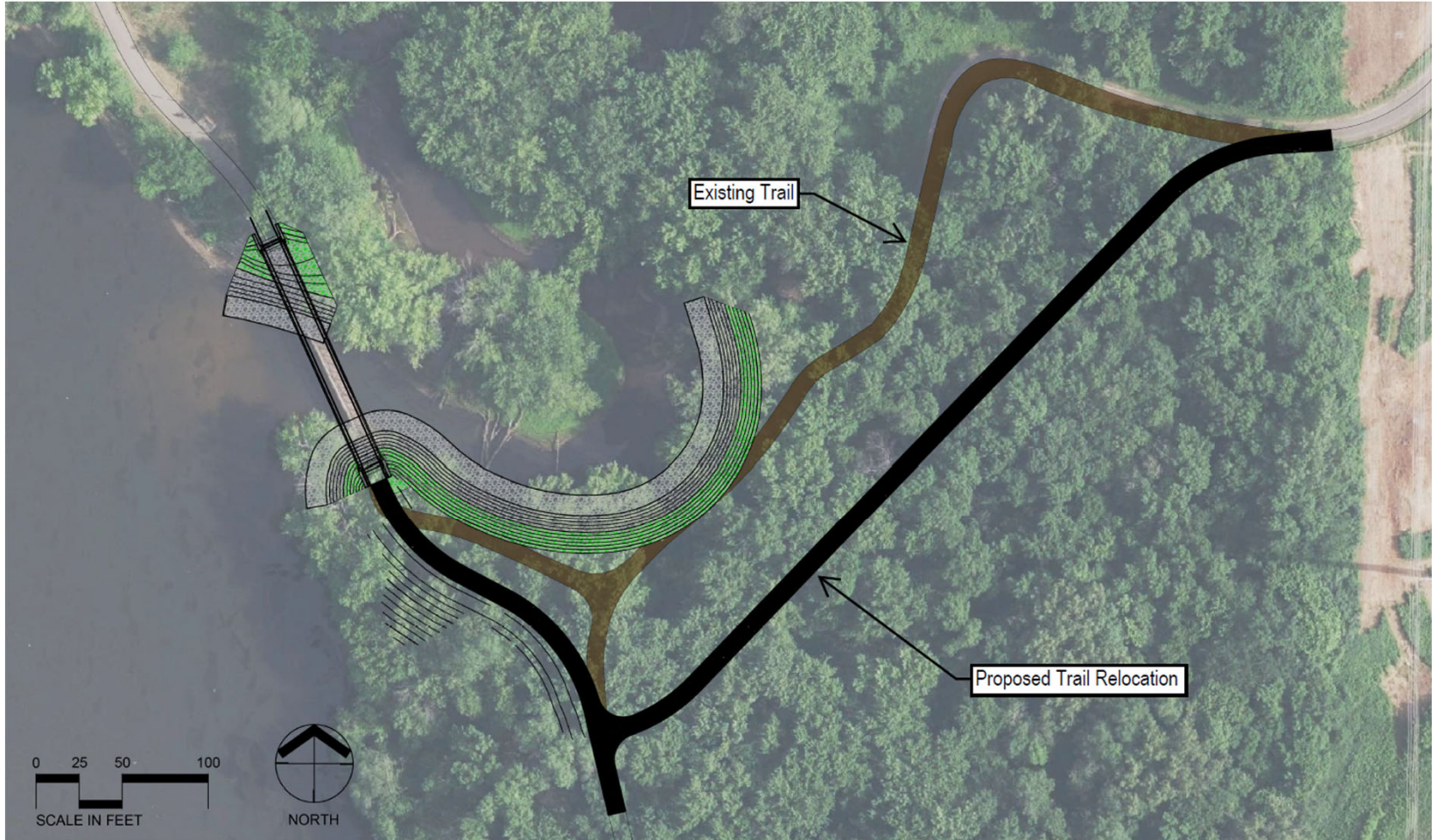


# CREEK BANK STABILIZATION





# TRAIL ROUTE ALTERATION





# PROPOSED IMPROVEMENTS

## CULVERT REPLACEMENT





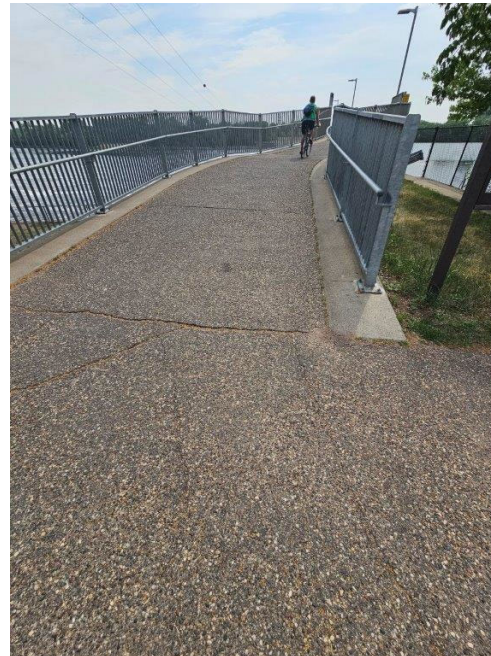
# CULVERT REPLACEMENT





# PROPOSED IMPROVEMENTS

## TRAIL REPLACEMENT





TRAIL REPLACEMENT





# PROPOSED IMPROVEMENTS


## TRAIL DETOUR

**COON RAPIDS DAM REGIONAL PARK  
TRAIL CLOSURE 2023 - 2024**

Due to stream bank erosion,  
Park trails are currently closed and will  
remain closed until reconstruction  
is complete.

Please follow MRRT trail detour route.

Mississippi River Regional Trail Detour



Legend:  
- Park under construction  
- Mississippi River Regional Trail - Detour  
- Mississippi River Regional Trail (MRRT)

INFORMATION: 763-324-3300 • ANOKACOUNTYPARKS.COM • Anoka County

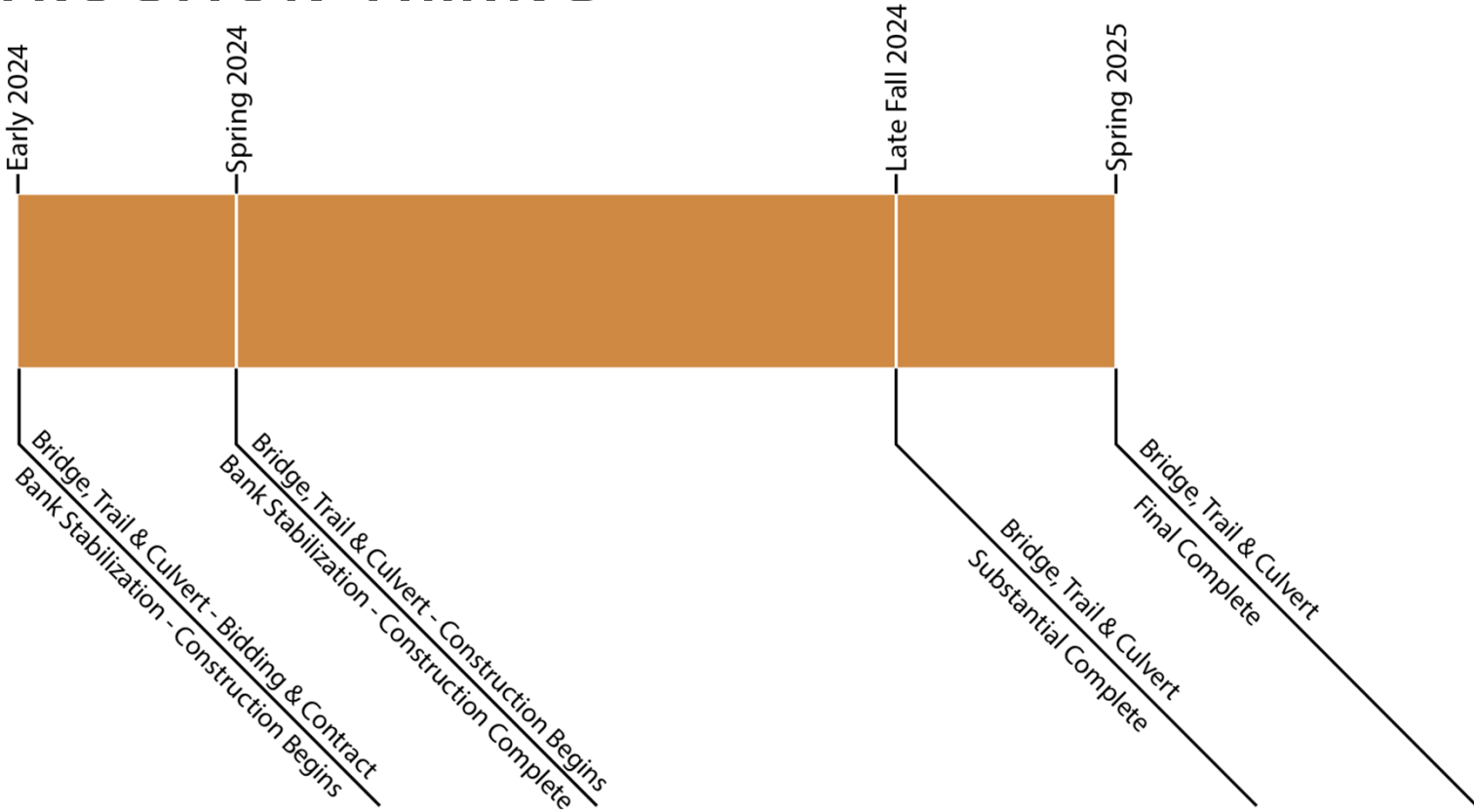


# TRAIL DETOUR



# PROPOSED IMPROVEMENTS

## CONSTRUCTION TIMING







ANOKA  
COUNTY  
PARKS

THANK YOU