

The logo for Anoka County Parks is a white, rounded rectangular shape with a thin white border. It contains the text "ANOKA COUNTY PARKS" in a sans-serif font. "ANOKA" and "COUNTY" are in a dark green color, while "PARKS" is in a brown color.

ANOKA
COUNTY
PARKS

The background image shows a wide, paved asphalt parking lot with white painted lines for parking spaces. The lot is situated in a park-like setting with trees and a building in the distance. The sky is overcast.

RICE CREEK CHAIN OF LAKES PARK RESERVE
**ROADWAY & PARKING LOT
IMPROVEMENTS**

WELCOME

**ANOKA
COUNTY**
P A R K S

DANIELLE SANBORN

LANDSCAPE ARCHITECT

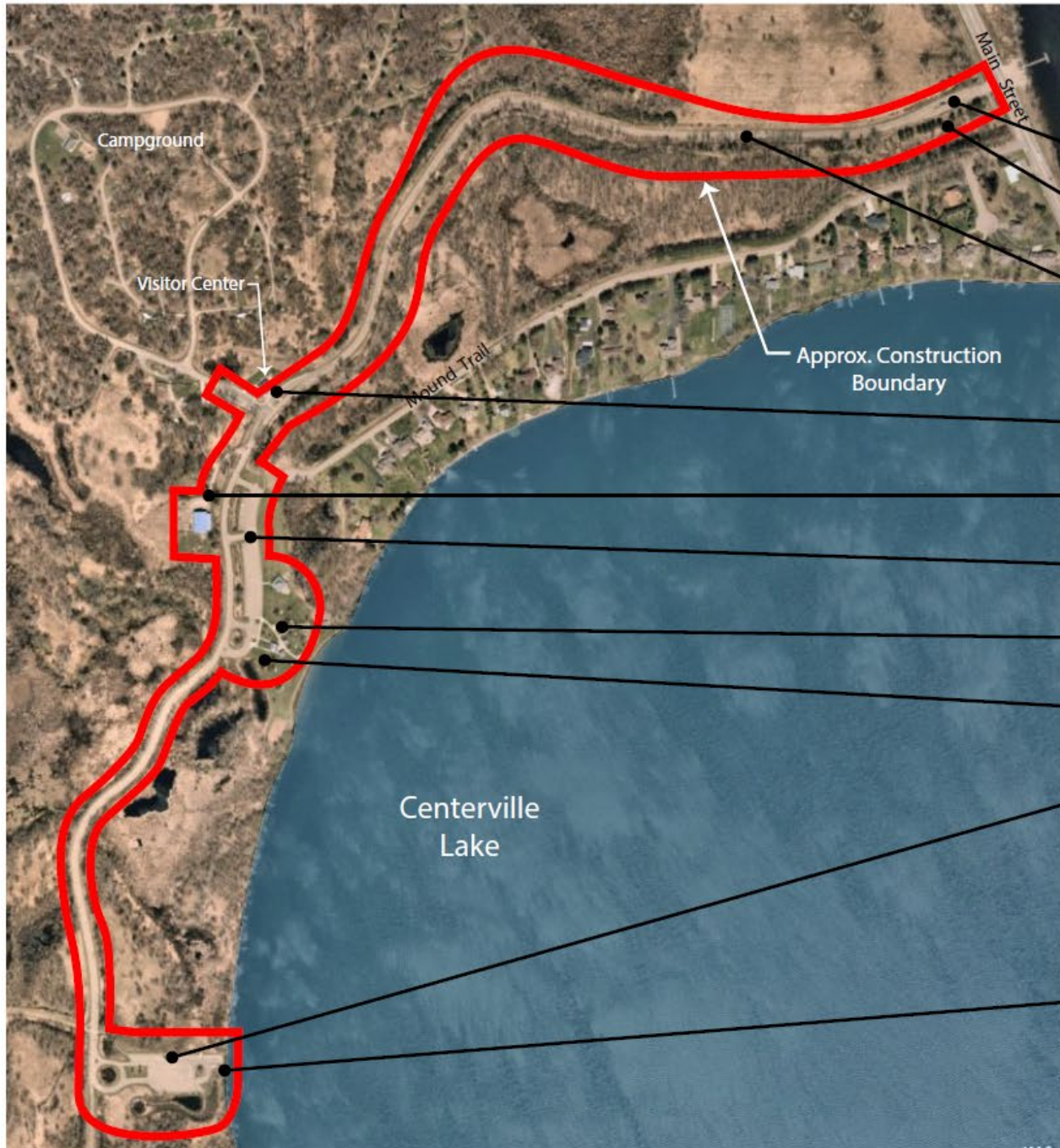
ANOKA COUNTY PARKS

KAREN BLASKA

PARK PLANNER

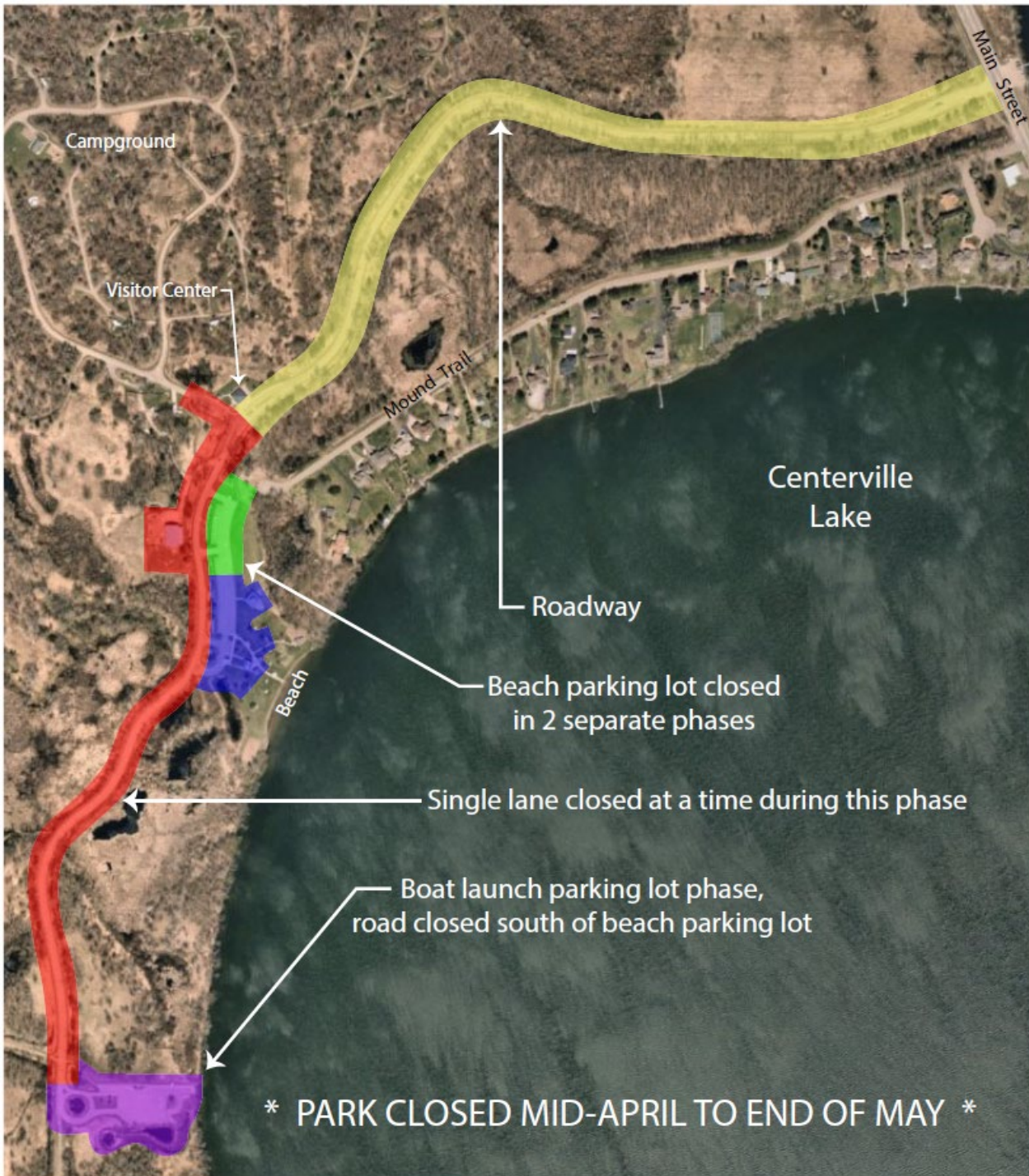
ANOKA COUNTY PARKS

OVERALL IMPROVEMENTS



- Gate house removed
- Trail reconstruction from Main Street to Boat Launch
- Roadway reconstruction
 - Road elevation raised from Main Street to Visitor Center
- Reconstructed sidewalks and median at Visitor Center
- Pave Maintenance drive and yard
- Reconstruct Beach parking lot
- Reconstruct Beach sidewalks (bid alternate)
- Construct Beach Hang Out area
- Reconstruct Boat Launch parking lot
 - Pull-off for tie down and AIS inspection
 - Lights installed at tie down area and access
 - Car parking spaces 17 (increased by 7)
 - Trailer parking spaces 28 (increased by 1)
- Reconstruct Centerville Lake access

CONSTRUCTION PHASING



ANOKA COUNTY PARKS

PHASING:

- The colored areas on the map represent different phases of the project.
- The order of the phasing will be determined by the contractor expect for the Entrance Road (Yellow Phase).
- The Entrance Road (Yellow Phase) will take place during the park closure Mid-April to May 24, 2024

PROPOSED IMPROVEMENTS

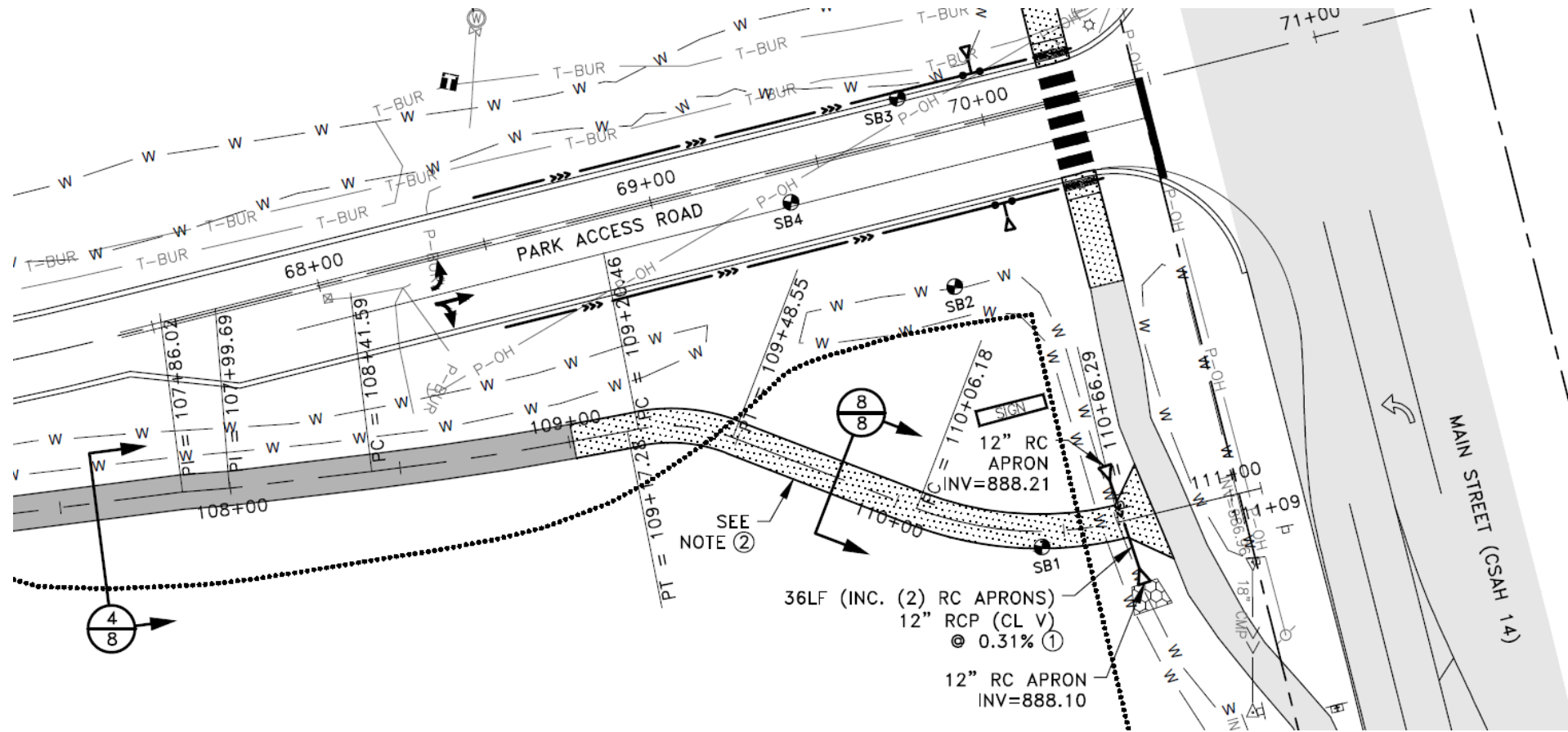
PARK ENTRANCE

- REMOVE GATE HOUSE TO REDUCE TRAFFIC CONGESTION
- TRAIL ROUTE ALTERATION TO REDUCE PEDESTRIAN/VEHICLE CONFLICTS
- NEW STREET LIGHTING



ROADWAY & PARKING LOT IMPROVEMENTS

PARK ENTRANCE



ROADWAY:
One entrance lane
Two exit lanes

TRAIL:
Routed away from
entrance road



PROJECT LOCATION

PROPOSED IMPROVEMENTS

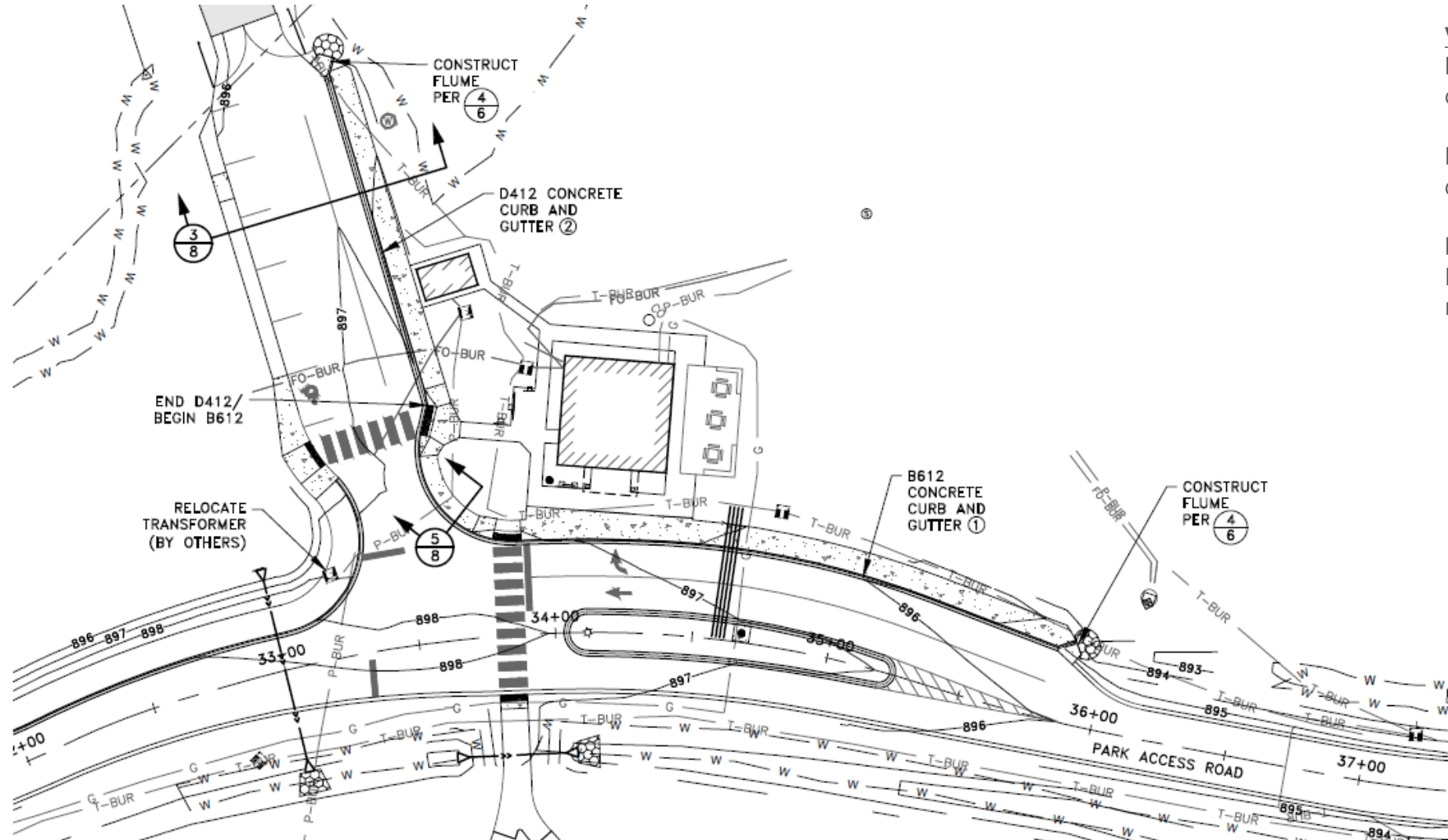
VISITOR CENTER

- LONGER TURN LANE/PULL OVER LANE
- SIDEWALK REPLACEMENT
- MEDIAN REPLACEMENT (IN FRONT OF VISITOR CENTER)
- MEDIAN REMOVAL (WEST SIDE OF INTERSECTION)
- NEW STREET LIGHTING



ROADWAY & PARKING LOT IMPROVEMENTS

VISITOR CENTER



VISITOR CENTER:
New sidewalk and curb

Longer pull over/turn lane

New median
Remove west median



PROJECT LOCATION

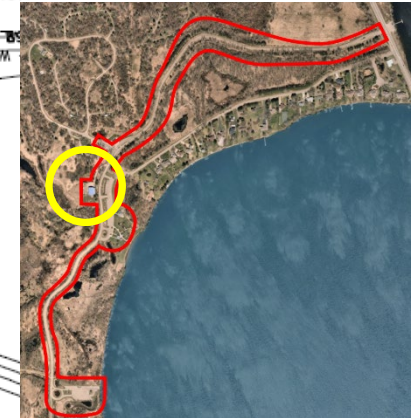
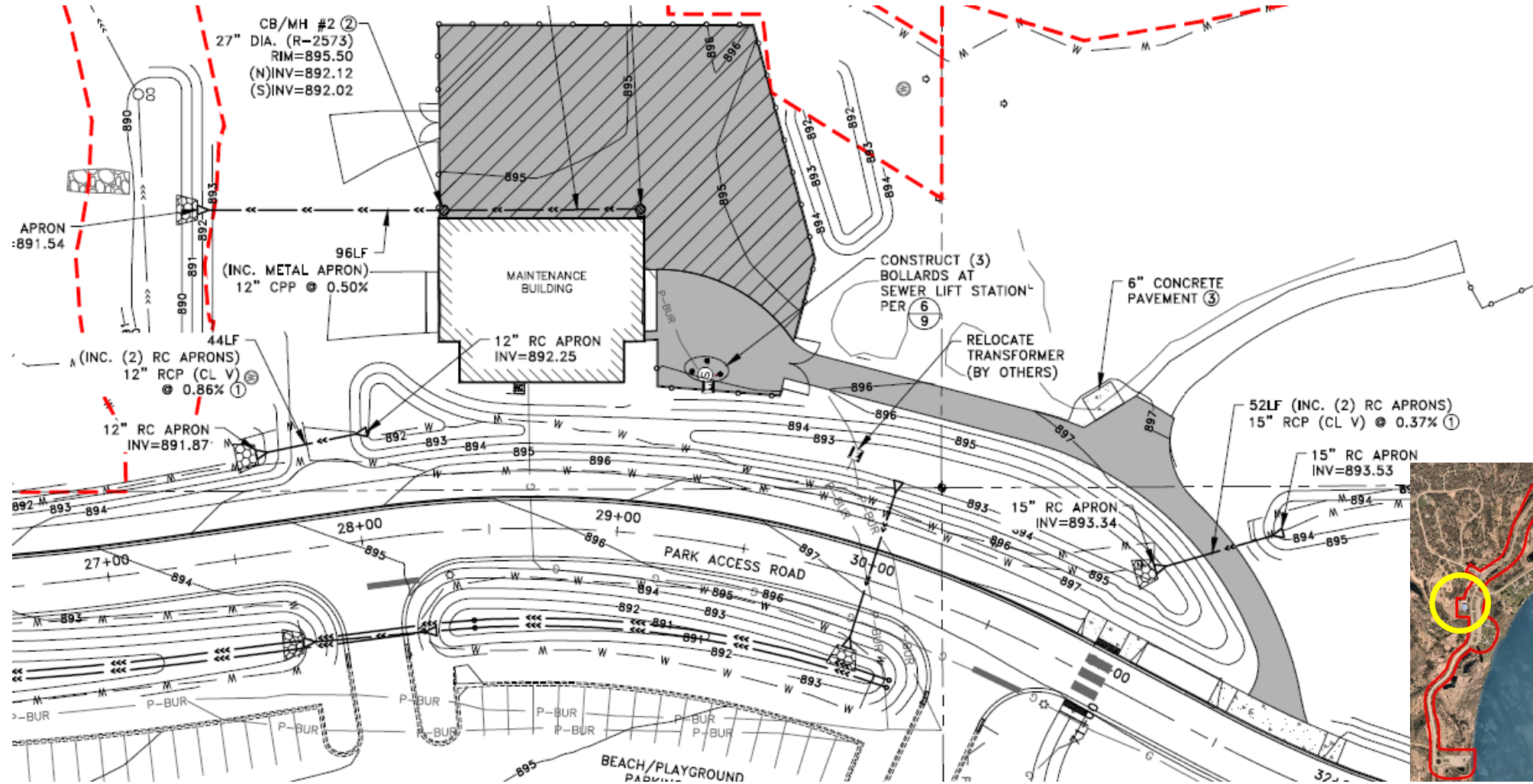
PROPOSED IMPROVEMENTS

MAINTENANCE FACILITY

- PAVE DRIVE AND MAINTENANCE YARD
- STORMWATER MANAGEMENT

ROADWAY & PARKING LOT IMPROVEMENTS

MAINTENANCE FACILITY



PROJECT LOCATION

PROPOSED IMPROVEMENTS

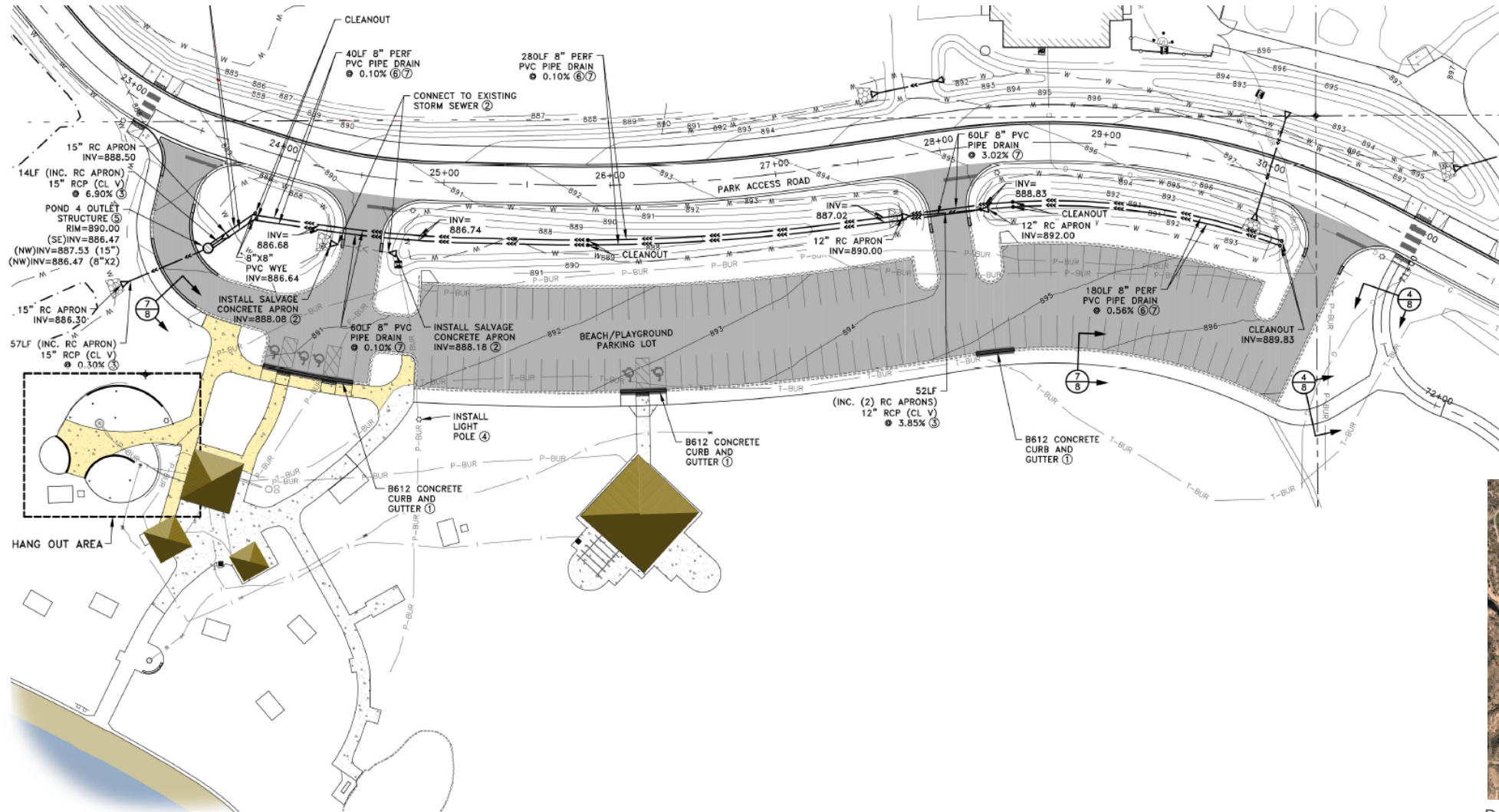
BEACH PARKING LOT

- REPAVE PARKING LOT
- RECONSTRUCT TRAIL ADJACENT TO PARKING LOT
- RECONSTRUCT SIDEWALKS ADJACENT TO PARKING LOT
- NEW STREET LIGHTING



ROADWAY & PARKING LOT IMPROVEMENTS

BEACH PARKING LOT



PROJECT LOCATION

PROPOSED IMPROVEMENTS

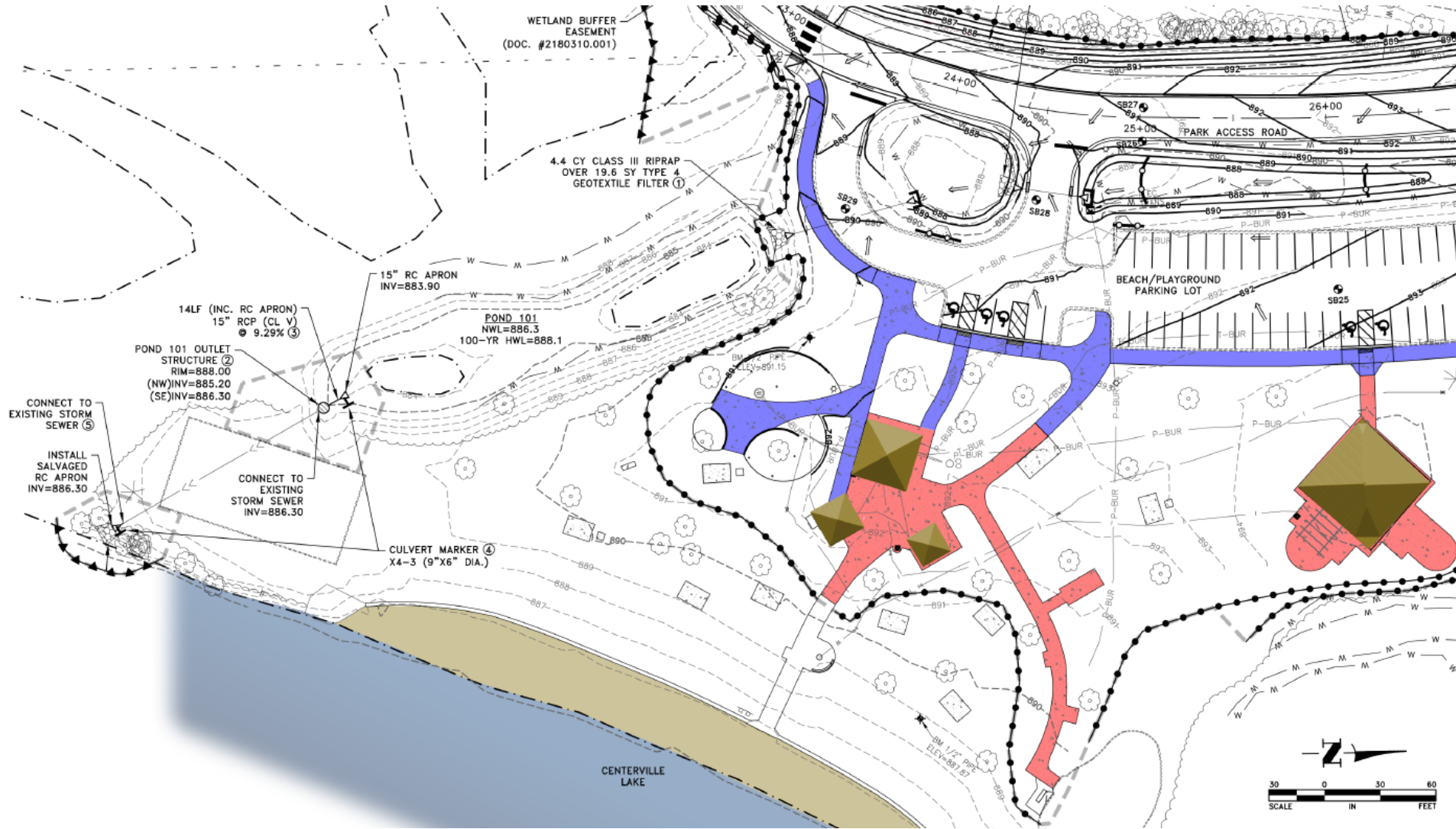
BEACH SIDEWALKS (BID ALTERNATE)

- REMOVE AND RECONSTRUCT SIDEWALKS TO BEACH AND AROUND PAVILIONS
- ONLY INCLUDED IN PROJECT IF BIDS ARE FAVORABLE



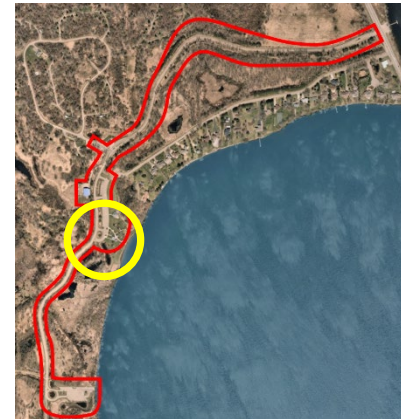
ROADWAY & PARKING LOT IMPROVEMENTS

BEACH SIDEWALKS



BLUE SIDEWALKS: Included in project, removed mid-April or early May. New sidewalks may not be constructed until the end of the project

PINK SIDEWALKS: Removal and reconstruction after Labor Day



PROJECT LOCATION

PROPOSED IMPROVEMENTS

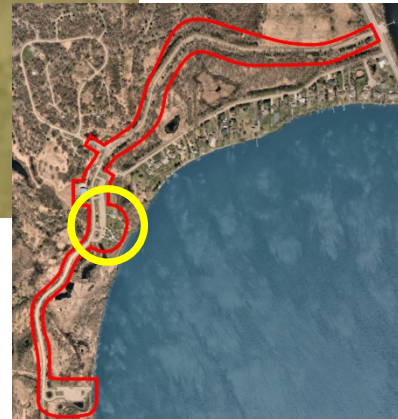
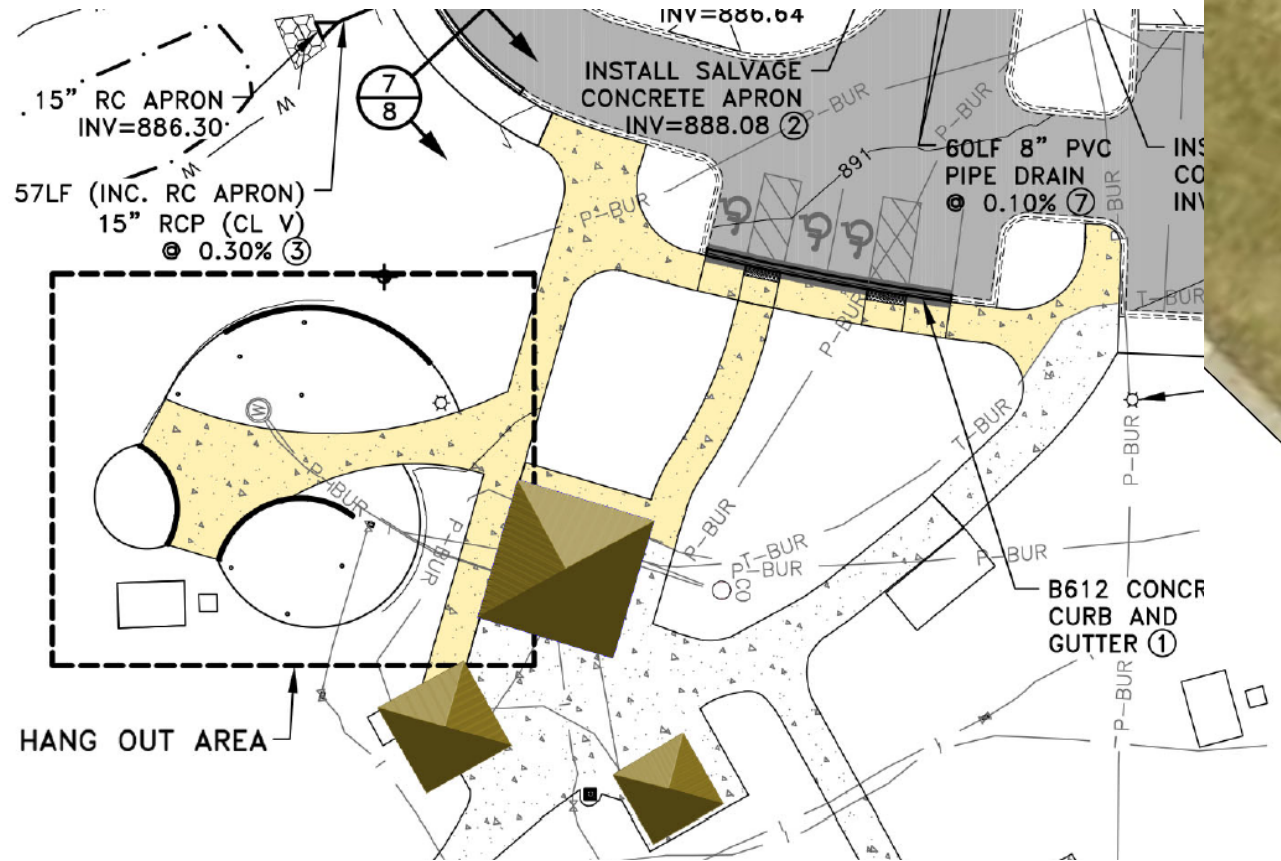
BEACH HANG OUT AREA

– CONSTRUCT HAMMOCK HANG OUT AREA



ROADWAY & PARKING LOT IMPROVEMENTS

BEACH HANG OUT AREA



PROJECT LOCATION

PROPOSED IMPROVEMENTS

BOAT LAUNCH PARKING LOT

- RECONSTRUCT LAKE ACCESS
- PULL-OFF FOR TIE DOWN AND AIS INSPECTION
- LIGHTS AT ACCESS AND TIE DOWN AREA
- ADDITIONAL TRAILER PARKING (INCREASED BY 1)
- ADDITIONAL CAR PARKING (INCREASED BY 7)
- BOAT LAUNCH WILL BE OPEN

May 24–27, 2024 AND July 4–7, 2024

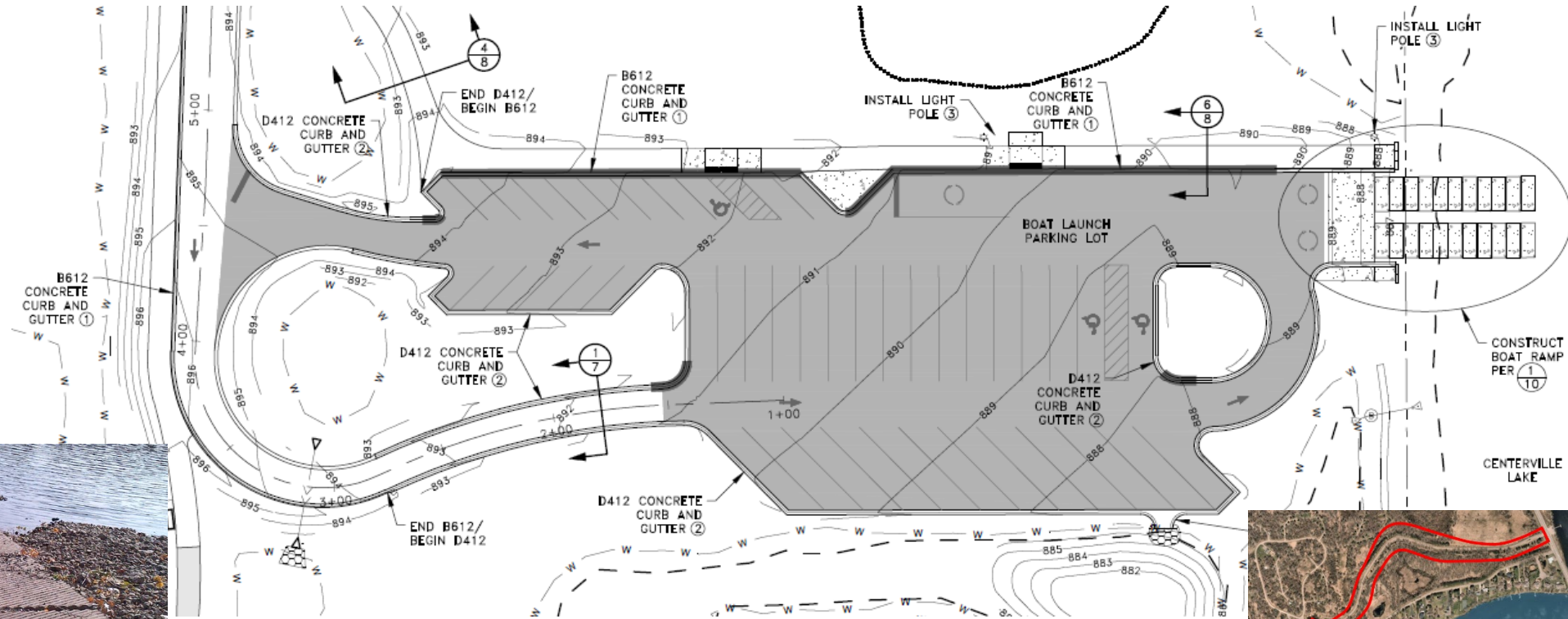


ROADWAY & PARKING LOT IMPROVEMENTS

BOAT LAUNCH PARKING



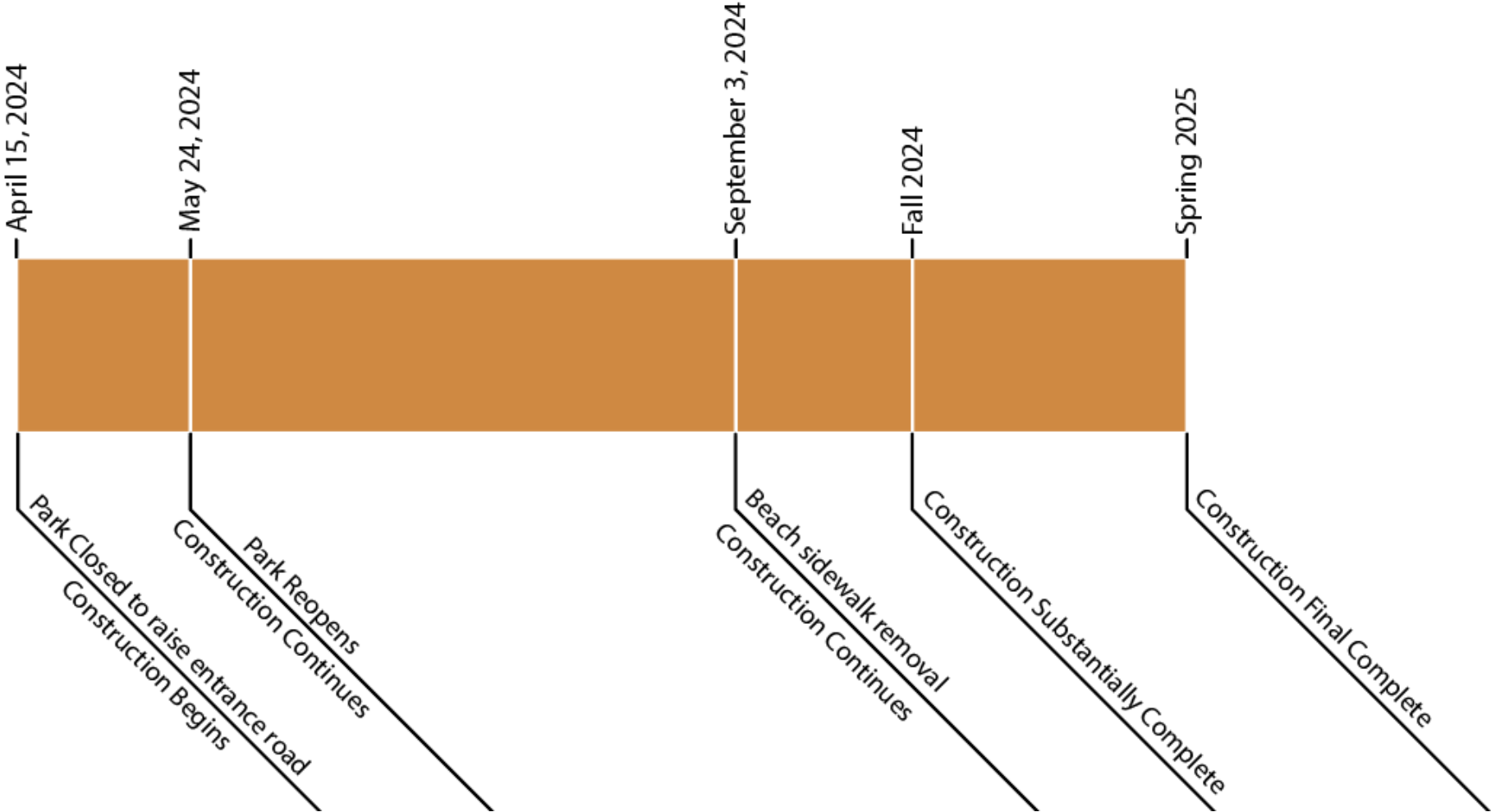
BOAT LAUNCHES PLANKS



PROJECT LOCATION

PROPOSED IMPROVEMENTS

CONSTRUCTION TIMING



vious

**ANOKA
COUNTY
PARKS**

THANK YOU

